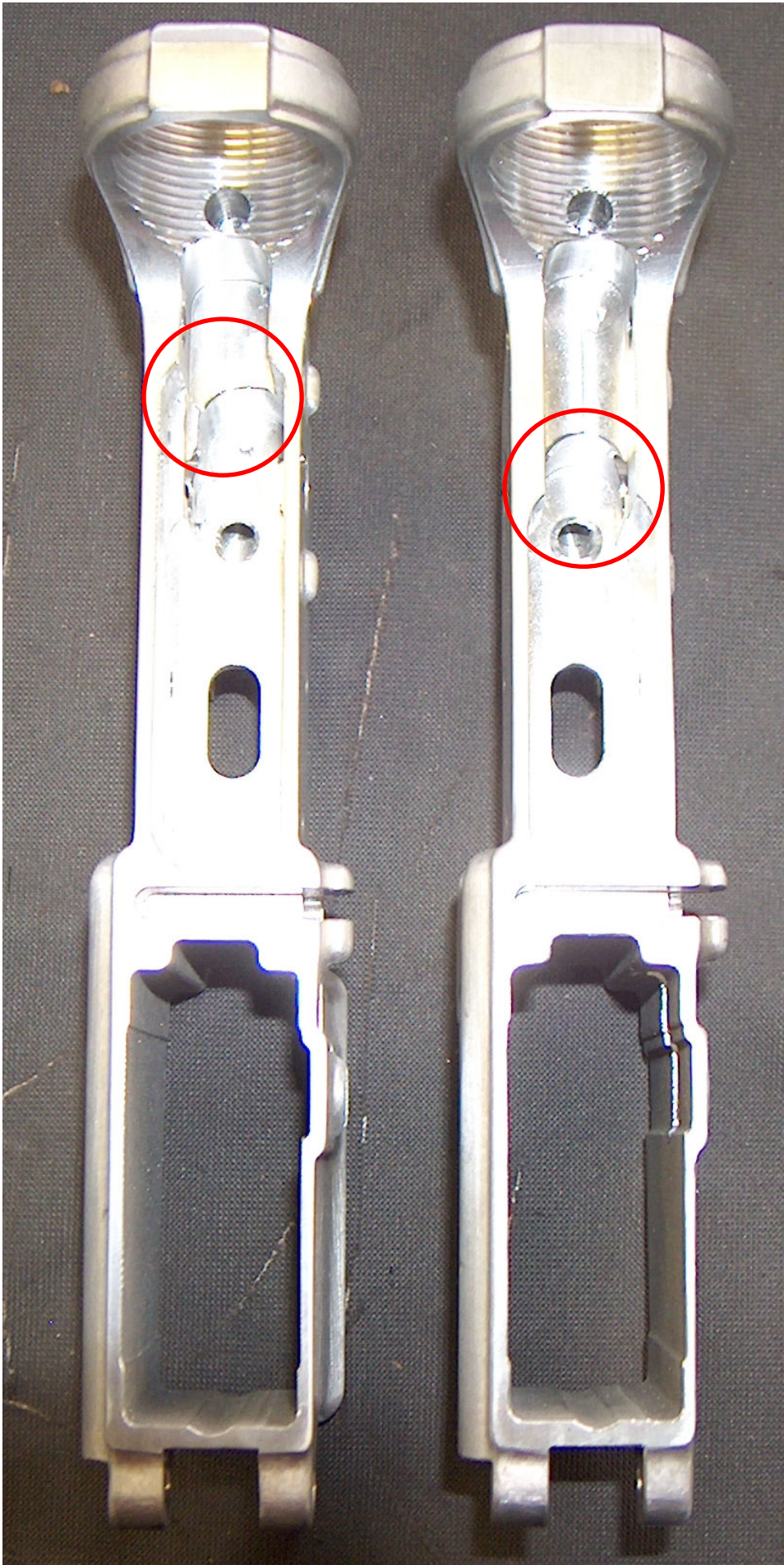


Difference LA-15 (semi-auto) and LA-16 (full-auto) models by part



Lower receiver

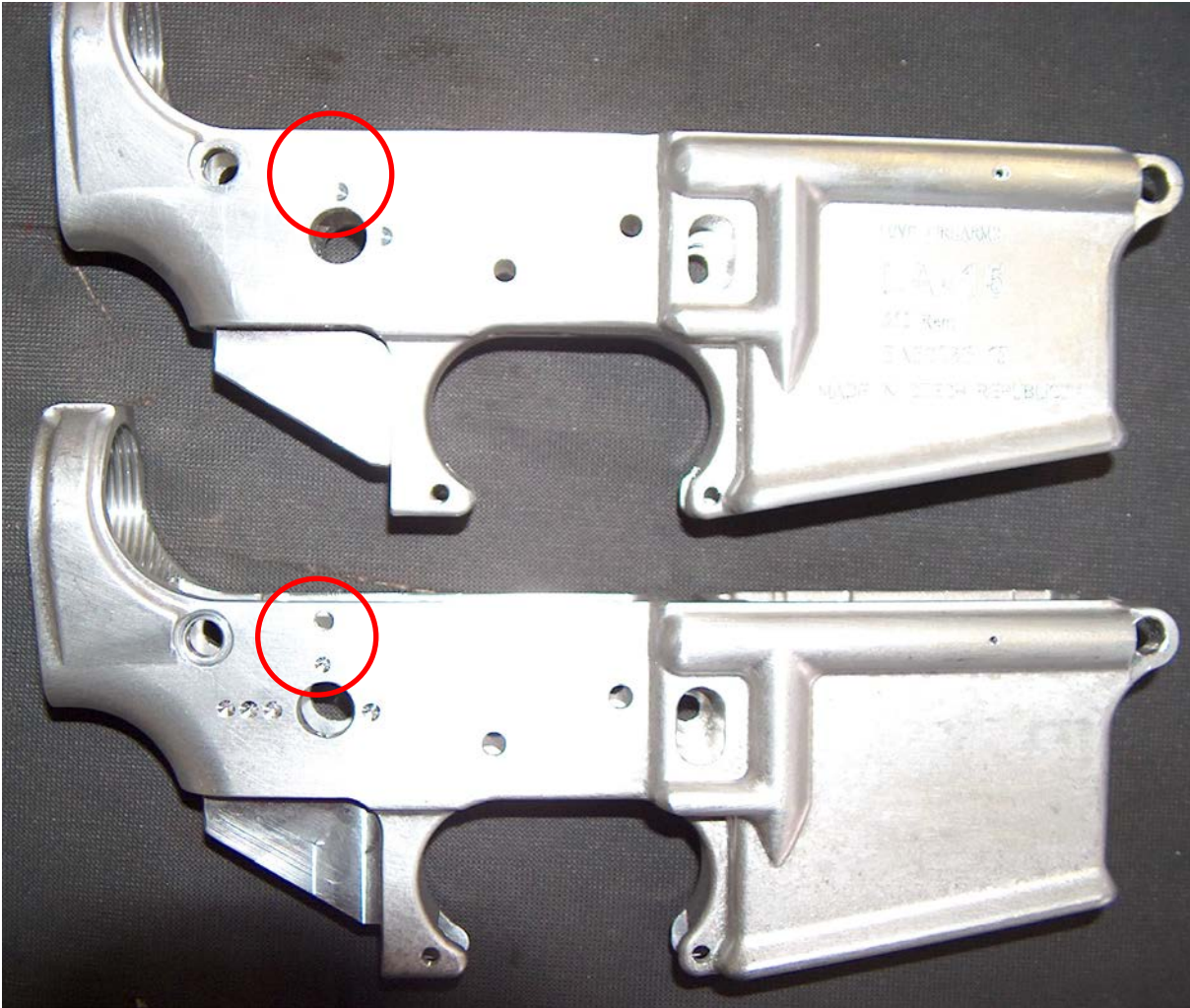
Left part: Full auto

Right part: semi-auto

Full-auto: with sear-milling

Semi-auto: without sear-milling

Difference LA-15 (semi-auto) and LA-16 (full-auto) models by part



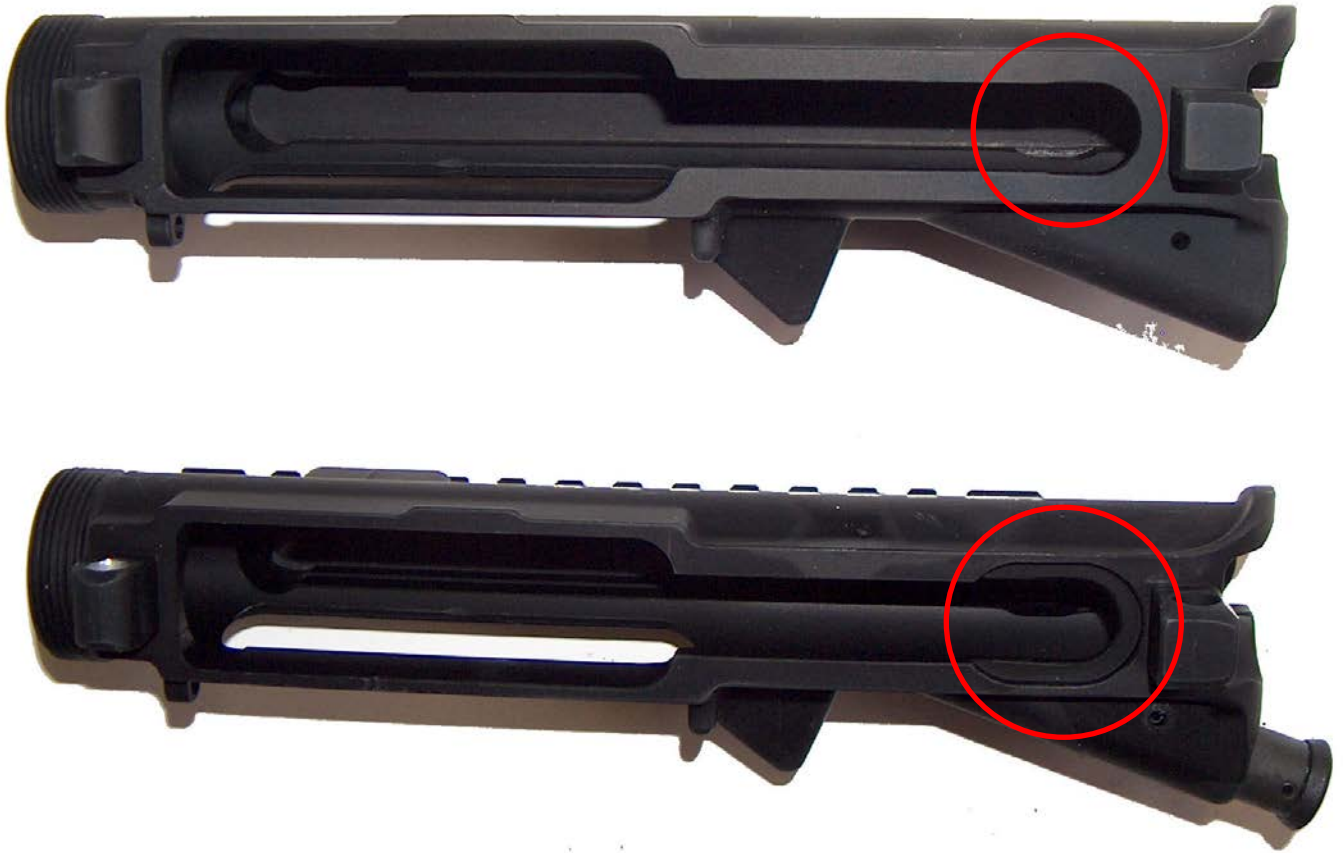
Upper part: Semi-auto

Lower part: Full-auto

Semi-auto: without sear-hole

Full-auto: with sear-hole

Difference LA-15 (semi-auto) and LA-16 (full-auto) models by part



Upper receiver:

upper part: Semi-auto

lower part : full-auto

Semi-auto : without sear-cut

Full-auto : with sear-cut

Difference LA-15 (semi-auto) and LA-16 (full-auto) models by part



Carrier

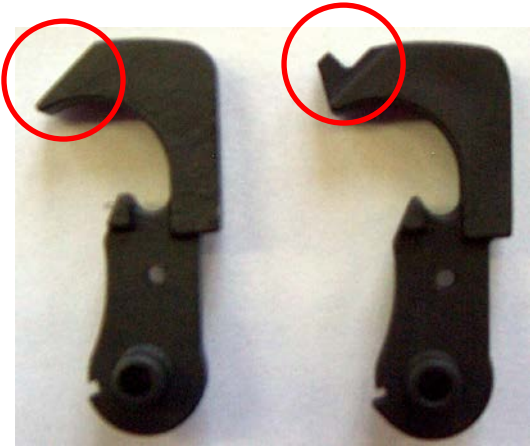
Upper part : Semi-auto

Lower part : full-auto

Semi-auto : milling out « sear-part », so sear didn't work

Small parts

Hammer

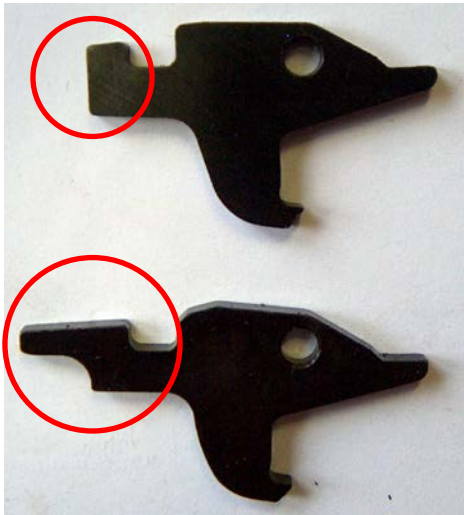


Left : Semi-auto

Right : full-auto

Semit-auto : without sear-holding

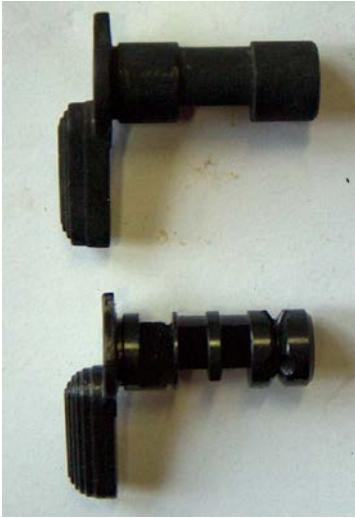
Disconnecter



Upper part: semi-auto

Lower part: full-auto

Selector



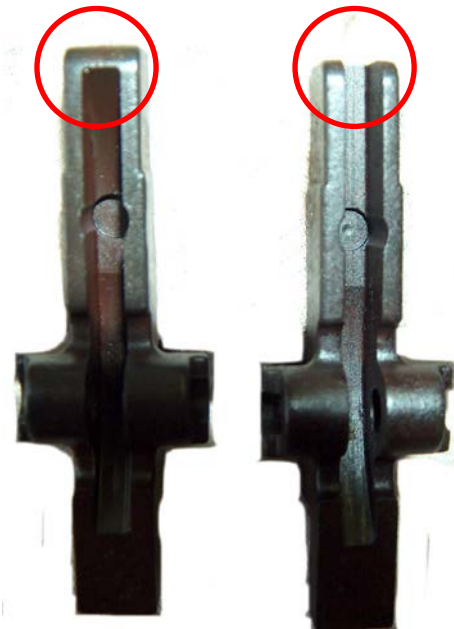
Upper part : Semi-auto

Lower part : full-auto

Semi-auto : Selection only « safe » and « single fire » possible

Full-auto : Selection « safe », « single fire » and « full-auto »

Trigger



Left: Semi-auto

Right: full-auto